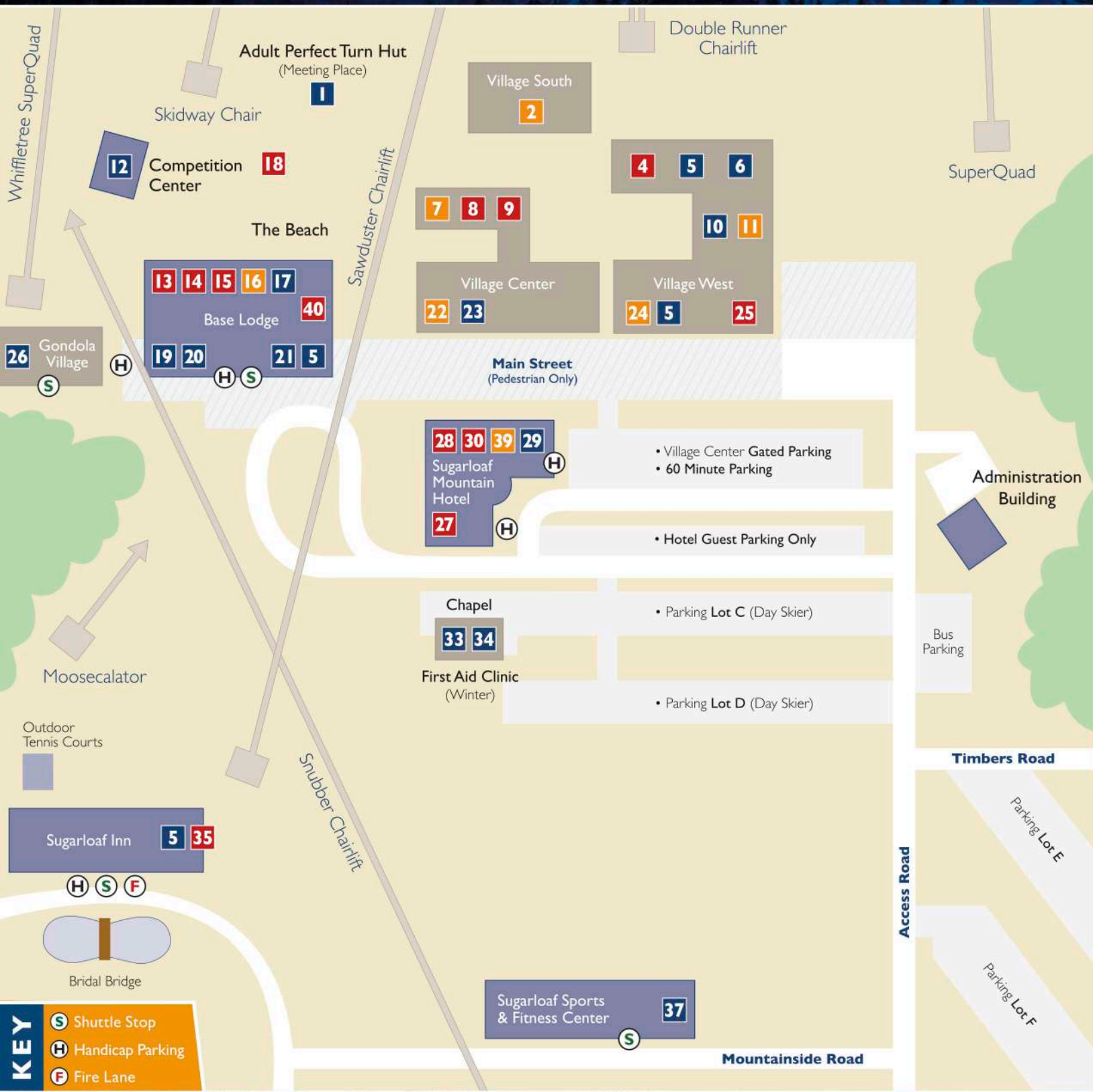


RESORT MAP



BURNT MOUNTAIN & BRACKETT BASIN®

The terrain in Burnt Mountain and Brackett Basin® is defined as "sidecountry." It offers skiers and riders a one-of-a-kind backcountry-style experience, within our patrolled terrain. The terrain varies from tight tree skiing to wide-open western-style glades. With an entire mountain to explore, skiers will enjoy quiet solitude in this vast wilderness area, providing the sensation of a true backcountry experience.



While this new terrain on Burnt Mountain and Brackett Basin® offers opportunities for new and exciting Sugarloaf adventures, it is not for everybody. The terrain is vast, contains unmarked hazards including cliffs, rocks, and fallen trees, and should be attempted by expert skiers and snowboarders only. We want you to explore this new terrain, but there are a number of safety tips that every skier and rider should be familiar with before embarking on this new challenge.

KNOW BEFORE YOU GO
Burnt Mountain and Brackett Basin® are new to all of us. Even those who have ventured into this area before will not recognize the new landscape. Familiarize yourself with the Sugarloaf trail map before you enter, and use your first trip onto Burnt Mountain and Brackett Basin® to acquaint yourself with the area.

ASK QUESTIONS
If you're unfamiliar with Burnt Mountain and Brackett Basin®, unsure if you're ready to try it out, or have any questions before you venture in, stop in at the Ski Patrol building on Spillway Crosscut and talk with a patroller.

SAFETY SIGNAGE
There is a giant sign at the entrance to Burnt Mountain and Brackett Basin® with a safety message. Read it. Keep your eyes open for trail signs marking the different glades, and orange discs marking the ski area boundary.

THE 3 & 3 RULE
The 3 & 3 Rule is simple: Never enter the Burnt Mountain and Brackett Basin® area with a group of fewer than 3 people, and never enter the Burnt Mountain and Brackett Basin® area after 3:00pm.

HAVE A MEET UP PLAN
Make a plan with your group for where you will meet if you get separated. That way if you get lost and don't show up, your friends can notify Ski Patrol.

KNOW YOUR LANDMARKS
When you're in the Burnt Mountain and Brackett Basin® area, make mental notes of distinct landmarks as you pass them, and be aware of your location. If you should become lost, this will help you identify your location to Sugarloaf Ski Patrol.

NEVER SKI OUTSIDE OF THE SKI AREA BOUNDARY
The Sugarloaf ski area boundary is marked with brightly colored orange signs. When skiing or riding on Burnt Mountain and Brackett Basin®, you should actively look for these boundary markers. Skiing outside of Sugarloaf's boundary is strictly prohibited.

CARRY A CELL PHONE
A cell phone will not save you in every situation, and there is no guarantee you will have service, but it can be a valuable tool if you ever need to call for help.

- SHOPS**
- BURTON SIGNATURE SHOP 7
 - THE SUGARLOAFER SHOP 11
 - SKI & SNOWBOARD RENTAL 16
 - DOWNHILL SUPPLY CO. 22
 - SUGARLOAF GROCERIES 24
 - KÜHL SIGNATURE STORE 2
 - SUGARLOAF BOARD ROOM 39
- RESTAURANTS**
- HUNKER DOWN 4
 - THE BAG & KETTLE 8
 - BLACK DIAMOND BURRITOS 9
 - NARROW GAUGE STATION 13
 - CANT DAWG 14
 - WIDOWMAKER 15
 - FOOD TRUCK ALLEY 18
 - D'ELLIE'S 25
 - 45 NORTH 27
 - JAVA JOE'S 28
 - ALICE & LULU'S 30
 - THE SHIPYARD BREW HAUS 35
 - EIGHTY 8 DONUTS 40
- SERVICES**
- ADULT PERFECT TURN HUT (meeting place) 1
 - ATM 5
 - SECURITY 6
 - BIRCHWOOD INTERIORS 10
 - COMPETITION CENTER 12
 - PERFECT TURN PROGRAMS 17
 - SUGARLOAF GUEST SERVICES 19
 - KING PINE ROOM 20
 - SUGARLOAF TICKET SALES 21
 - VILLAGE LAUNDRY 23
 - SUGARLOAF CHILD CARE 26
 - MOUNTAINSIDE REAL ESTATE 29
 - R.H. BELL INTERFAITH CHAPEL 33
 - FIRST AID CLINIC (winter) 34
 - SUGARLOAF SPORTS & FITNESS CENTER 37
- For specific resort information please call 800 THE LOAF (Reservations and Season Pass), 207.237.2000 (General Switchboard), or 207.237.6808 (Snow Phone), or visit sugarloaf.com.

RESTAURANTS

Whether you're in the mood for a romantic candlelit dinner or a quick bite, we've got the perfect place. Here's just a taste of the many on-mountain restaurants at Sugarloaf:

- 45 NORTH • 207.237.4220**
Modern Maine comfort food in a setting reminiscent of the Sugarloaf region's rustic farm houses. Located in the Sugarloaf Mountain Hotel. Breakfast and dinner daily. Call ahead for reservations.
- THE WIDOWMAKER • 207.237.6845**
Sugarloaf's legendary watering hole saw a floor-to-ceiling renovation over the summer, breathing new life into this iconic après ski establishment. For a party anytime, live entertainment, slopeside cocktails or a quick in-and-out lunch, stop by the Widowmaker upstairs in the Base Lodge.
- BULLWINKLE'S • 800.THE.LOAF**
Experience ski-in/ski-out convenience with a view that can't be beat at Bullwinkle's. Stop in for a quick lunch or snack throughout the day or have a one-of-a-kind dining experience—journey up the mountain by snowcat after dark for an elegant multicourse tasting. Dinners are Saturday nights by reservation only.
- SHIPYARD BREW HAUS • 207.237.6834**
Fresh Maine seafood and pub favorites served in a slightly more sophisticated way. Open for breakfast, lunch, and dinner at the Sugarloaf Inn. Pizza delivery available on-mountain.
- HUNKER DOWN • 207.235.6095**
Located in Village West, Hunker Down offers creative comfort food to satisfy the most decadent après cravings.

SUGARLOAF UPHILL ACCESS GUIDELINES

- WHAT DO I NEED TO KNOW?**
- Ski Patrol reserves the right to close the mountain to these activities at any time due to severe weather, dangerous surface conditions, or other factors. Also, Ski Patrol may, at any time, change the approved route of uphill travel based on mountain operations.
 - Any changes to these policies due to weather, mountain operations, or other factors will be posted on a signboard located on the trail map sign at the bottom of the SuperQuad. All climbers should plan to check this board prior to setting out. Ski Patrol will be at the bottom of Double Runner Chair from 6:45 – 7:00am to answer any questions.
- WHAT DO I NEED FOR A TICKET?**
- All uphill skiers and riders are required to have a valid season pass or day ticket, and it must be visible. If you do not intend to ride a lift at any point during the day, you can purchase an Uphill Access day ticket for \$10 at Guest Services.
- WHEN CAN I START CLIMBING?**
- The mountain opens to uphill travel at 7:00am, and to downhill traffic at 8:30am. Please note that no downhill traffic is permitted prior to 8:30am. As always, downhill traffic is limited to open terrain only.
 - Ski Patrol clears the mountain of all guests and employees at the end of operating hours every day. If you are on the mountain at this time you will be asked to ski down.
- WHERE CAN I CLIMB?**
- After 8:30am, uphill travel is limited to Windrow and west of Windrow from the base to Bullwinkle's, and the Timberline trail from Bullwinkle's to Spillway Crosscut or the Summit. Please use the roped area on the east side of the Timberline trail when travelling up the steep pitch above Bullwinkle's. The gladed areas east of the West Mountain trail are also permitted areas of travel to the Bullwinkle's area. Brackett Basin® and Burnt Mountain are also open to uphill travel when they are designated as open by Ski Patrol.
 - Spillway Crosscut is closed to uphill traffic at all times.
 - Climbers who wish to skin above Spillway Crosscut are required to check in with Ski Patrol at the top of the Skyline lift.
 - When travelling uphill, please climb in single file and ensure that you are visible to downhill traffic at all times.

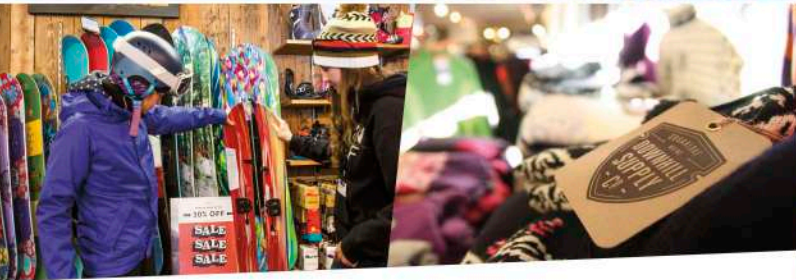


PURCHASE YOUR LIFT TICKETS ONLINE BEFORE YOUR VISIT AND SAVE!

Save as much as 30% when you purchase your tickets online. Visit sugarloaf.com to learn more.



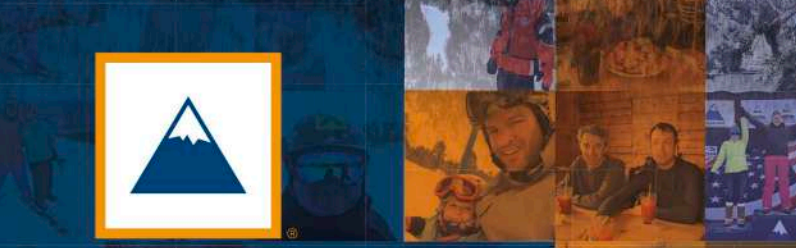
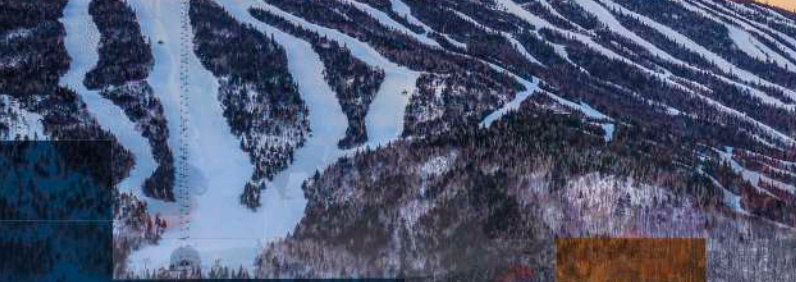
SHOPS & SERVICES



- DOWNHILL SUPPLY CO. • 207.237.6990**
The one-stop-shop for all your mountain apparel, ski gear, tuning needs and more.
- BURTON SIGNATURE SHOP • 207.237.6829**
Stop into the Burton Signature Store for all of the latest gear and apparel from the biggest name in snowboarding.
- RENTAL EQUIPMENT • 207.237.6951**
Sugarloaf rental and learning programs feature all-new, high-performance equipment. Skis by Rossingol and Völkl, boots by Dalbello and Technica, and state-of-the-art Rossingol snowboards make skiing and snowboarding easy. Rental skis and snowboards are available on the top floor of the Base Lodge, adjacent to the flagpole deck on the slope side of the building.
- SUGARLOAFER SHOP • 207.237.6718**
Your one-stop-shop for Sugarloaf logo gear. From sweatshirts and jackets to home décor, if it has a Sugarloaf logo, you'll find it here.
- KÜHL SIGNATURE STORE • 207.237.6755**
Visit the recently expanded Kühl Signature Store in Village South for the latest in outdoor lifestyle clothing from Kühl.
- SUGARLOAF BOARD ROOM • 207.237.6875**
Visit Sugarloaf's newest retail location, the Sugarloaf Board Room offering a wide variety of boards, binding, boots, gear and more.



SHOPS & SERVICES



TRAIL MAP 2019-2020

© 2019 SUGARLOAF MOUNTAIN CORPORATION



With BoyneRewards, every dollar you spend at Sugarloaf and numerous Boyne resort locations earns you points which can be redeemed for lift tickets, retail purchases, season passes and more. Becoming a BoyneRewards member is free, and joining is easy. Visit www.boynerewards.com and join today!

Outside TELEVISION

WSK17 SUGARLOAF

THE MOUNTAIN REPORT

Tune in to WSKI-TV 17 for the latest weather and trail conditions. Watch the Mountain Report Live on Friday nights, Saturday, Sunday and Monday mornings and holiday weeks for live condition reports and the latest news from Sugarloaf.

BURNT MOUNTAIN

The Burnt Mountain area originates from the summit of Burnt Mountain and features much of the steepest sidecountry terrain at Sugarloaf. It is hand cut, with a mix of tight, narrow glades and wider expanses. The summit of Burnt Mountain can be accessed via the Burnt Mountain hiking trail, which begins at the terminus of the Golden Road.

EASTERN TERRITORY

The Eastern Territory represents the far eastern region of Burnt Mountain. This area was logged by a commercial harvester, and features a mix of wide open glades and logging roads. The logging roads all lead to two large log yards, which can be used as reference points.

BRACKETT BASIN®

Brackett Basin® is the first area accessed off the King Pine lift. It is hand cut, and features a mix of steep, narrow glades, wider expanses, as well as several small cliff bands. You can ski back to the King Pine or Whiffletree lifts from anywhere in Brackett Basin®.

The Snowfields™ (SEE INSET)

The Snowfields™ (ADVANCED TERRAIN)

FRONT SIDE

BACK SIDE

Explore deep powder and rugged steeps on Burnt Mountain with New England's only true cat skiing operation.

SUGARLOAF.COM/CATSKIING

KEY

- EXPERTS ONLY (use extreme caution)
 - MOST DIFFICULT
 - MORE DIFFICULT
 - EASIER
 - WILD THINGS (not groomed)
 - SLOW AND FAMILY SKIING
 - FRIENDLIEST WAY DOWN
 - FREESTYLE TERRAIN
 - SKI AREA BOUNDARY
 - GOLDEN ROAD
 - BURNT MOUNTAIN TRAIL (some skier traffic between Kennebec Glade and Upper Log Yard)
 - WHIFFLETREE EGRESS (some walking required)
 - KING PINE X-CUT
 - SNUBBER EGRESS (slower route; no walking required. Connects with trail network at the base of the Snubber lift)
 - LOGGING ROAD
 - CAT SERVICE ROAD
 - DENOTES UNDEVELOPED TERRAIN
 - SKIN ROUTE
- FACILITIES**
- BASE LODGE
 - SUGARLOAF INN
 - SUGARLOAF MOUNTAIN HOTEL
 - SPORTS & FITNESS CENTER
 - CHILD CARE - GONDOLA VILLAGE

LIFTS (MEASURED IN VERTICAL FEET)

- HIGH-SPEED QUADS
 - WHIFFLETREE SUPERQUAD™ 1,120'
 - SUGARLOAF SUPERQUAD™ 1,750'
- HIGH-CAPACITY QUADS
 - KING PINE 1,074'
 - TIMBERLINE 980'
 - SKYLINE 1,454'
 - SNUBBER 400'
 - DOUBLE CHAIRS
 - SKIDWAY 143'
 - SAWDUST 130'
 - DOUBLE RUNNER EAST 617'
 - DOUBLE RUNNER WEST 1,014'
 - WEST MOUNTAIN 1,275'
 - SURFACE LIFTS
 - BATEAU T-BAR 973'
 - MOOSEALATOR

LIFTS

21,805 skiers per hour
13 lifts total
2 high-speed SuperQuads®
3 high-capacity quads
5 doubles
2 surface lifts
1 triple

TRAILS

57 miles of trails
163 trails and glades (our longest trail)
3.5 miles skiable acres

ELEVATION

4,237' (Maine's highest skiable peak)
2,820' continuous vertical drop
1,417' base

SNOW

200" average snowfall
618 acres snowmaking coverage

LIFT AND TRAIL HOURS

Lifts are open at 8:30am to 3:45pm with the exception of King Pine and Whiffletree, which open at 9:00am midweek, Timberline at 9:00am daily, and Snubber at 8:00am weekends and holidays. Brackett Basin® closes at 3:00pm.

THE SNOWFIELDS™

- | | | |
|---------------|----------------------|--------------------|
| 1 HIGH RIGGER | 7 WHITE NITRO EXT. | 70 ADRENALINE RUSH |
| 2 HARD TACK | 8 BUBBLECUFFER EXT. | 71 BALL AND CHAIN |
| 3 PURE HEAT | 9 GONDOLA LINE EXT. | 72 EXTREME CHUTE |
| 4 JAGGER | 10 NARROW GAUGE EXT. | 73 AWESOME |
| 5 IGNITOR | 11 WINTER'S WAY EXT. | 74 HELL'S GATE |
| 6 POWDER KEG | | |
- GLADES AND CONNECTING TRAILS**
- | | | |
|-----------------------|-------------------------|------------------------------|
| 13 OLD WINTER'S WAY | 28 BOOMER GLADE | 43 LOWER ROOKIE RIVER |
| 14 CANT HOOK GLADE | 29 MID STATION X-CUT | 44 KERF GLADE |
| 15 WHITE NITRO | 30 CRIBWORKS | 45 PICARON |
| 16 BLADE GLADE | 31 UPPER SHEER BOOM | 46 LOWER SPILLWAY |
| 17 STUMP SHOT GLADE | 32 KICK BACK | 47 TOTE ROAD X-CUT |
| 18 SLUICE CHUTE | 33 SWEDISH FIDDLE GLADE | 48 RAM PASTURE GLADE |
| 19 SLUICE HEADWALL | 34 BIRCH HOOK | 49 BOOMSCOOTER |
| 20 WEST SLUICE CHUTE | 35 WINDROW EXT. | 50 SCHIPPER'S STREAK |
| 21 GIN POLE | 36 BUCKSAW X-CUT | 51 BARBER CHAIR GLADE |
| 22 U. DOUBLE BITTER | 37 RAKER TOOTH GLADE | 52 DROPLINE GLADE |
| 23 PICK POLE | 38 BROCCOLI GARDEN | 53 JACK POT GLADE |
| 24 PINCH | 39 STUB'S GLADE | 54 BRANDING AX GLADE |
| 25 TIN PANTS | 40 MOOSE ALLEY | 55 GREENHORN GLADE |
| 26 BRIDLE CHAIN | 41 BLUEBERRY'S GROVE | 56 GONDI GLADE |
| 27 FRED'S PITCH GLADE | 42 ROOKIE RIVER | 57 ALICE'S WINTER LAND GLADE |
- BURNT MOUNTAIN AND BRACKETT BASIN®**
- | | | |
|--------------------|---------------------|------------------------------|
| 55 GOLDEN ROAD | 61 SWEEPER GLADE 2 | 67 CANT DOG GLADE 1 |
| 56 BIRLER GLADE 1 | 62 ROUGH CUT GLADE | 68 CANT DOG GLADE 2 |
| 57 BIRLER GLADE 2 | 63 RED HORSE GLADE | 69 ANDROSCOGGIN GLADE |
| 58 EDGER GLADE 1 | 64 BLACKSMITH GLADE | 70 SLASH FIRE GLADE |
| 59 EDGER GLADE 2 | 65 HIGH BALL GLADE | 71 LITTLE ANDROSCOGGIN GLADE |
| 60 SWEEPER GLADE 1 | 66 LOGGING ROAD | 72 KENNEBEC GLADE |

SLOPE SAFETY

Skiing can be enjoyed in many ways. At ski areas you may see people using alpine, snowboard, telemark, cross-country or other specialized ski equipment, such as that used by disabled or other skiers. Regardless of how you decide to enjoy the slopes, always show courtesy to others and be aware that there are elements of risk in skiing and riding that common sense and personal awareness can help reduce. Observe the code listed below and share with other skiers the responsibility for a great skiing experience.

- Always stay in control and be able to stop or avoid other people or objects.
- People ahead of you have the right of way. It is your responsibility to avoid them.
- You must not stop where you obstruct a trail, or are not visible from above.
- Whenever starting downhill or merging into a trail, look uphill and yield to others.
- Always use devices to help prevent runaway equipment.
- Observe all posted signs and warnings. Keep off closed trails and out of closed areas. Snowfields are considered part of the trail system.
- Prior to using any lift, you must have the knowledge and ability to load, ride and unload safely.
- It's a big mountain. Don't ski alone, especially on your last run. The mountain is not patrolled after the lifts close.

This is a partial list. Be safety conscious. Officially endorsed by NATIONAL SKI AREAS ASSOCIATION, NATIONAL SKI PATROL AND PROFESSIONAL SKI INSTRUCTORS OF AMERICA.

FIRST AID FACILITY

The First Aid Facility is located at the R.H. Bell Interfaith Chapel off the Birches Slope.

KNOW THE CODE. IT'S YOUR RESPONSIBILITY.

BE ADVISED THAT ALL FENCING, EQUIPMENT COVERS, POLES, SIGNAGE AND OTHER MARKING DEVICES ARE IN PLACE TO INFORM YOU AND TO INDICATE A POTENTIAL HAZARD OR OBSTACLE. THESE MARKERS WILL NOT PROTECT YOU FROM INJURY. IT IS YOUR RESPONSIBILITY TO STAY AWAY FROM MARKED AREAS.

SKI WITH CARE

Alpine skiing and snowboarding are challenging and dangerous recreational activities in rough mountain forest terrain. Be alert to continually changing weather, visibility and surface conditions. Snow, ice, sheer drop-offs, bare ground, rocks, roots, stumps, trees, lift towers, ruts, bumps, snowmaking equipment, grooming vehicles, snowmobiles, other skiers, power poles and many other natural and man-made obstacles can cause permanent, catastrophic injury or death. Your safety is directly affected by your judgment. Failure to use good judgment, ski responsibly or follow Your Responsibility Code may result in the loss of skiing or snowboarding privileges. Snowmaking, grooming and ski area maintenance procedures and vehicles may be in operation at any time on open terrain. Do not ski or snowboard near such equipment.

Skiing and snowboarding in Sugarloaf Mountain's gladed terrain requires good judgment and personal awareness. Access in and out of these glades can be challenging. The gladed regions are vast and ski patrol's ability to locate lost or injured patrons may be hindered by the scope of the terrain. All skiers and snowboarders are encouraged to enter the glades in groups of 3 or more and not travel alone. Most of this area is left in its natural state. It contains unmarked hazards including cliffs, rocks, fallen trees and avalanche hazards. Sugarloaf Mountain strictly forbids skiers and snowboarders from exiting the ski area boundaries and all signs and markers must be obeyed. Glades are for expert skiers and snowboarders only and all guests who enter these areas should be familiar with the trail map and ask questions to ski patrol before proceeding. Do not enter this area after 3:00pm.

Please respect our mountain by giving this trail map to a friend or depositing it in a proper receptacle.